

# Sage ERP X3

## Standard Edition

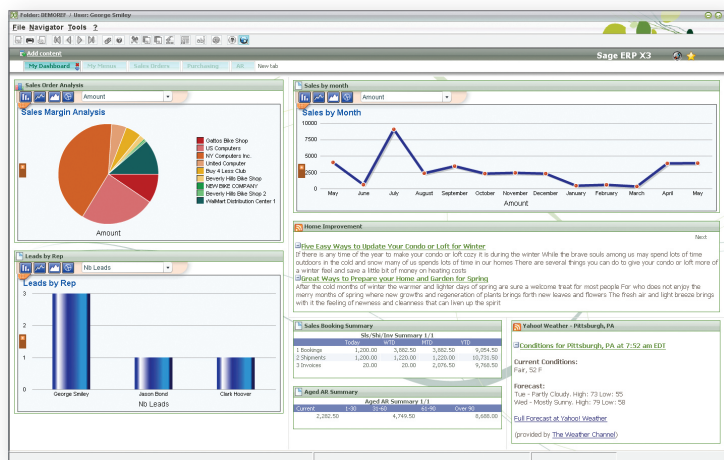
Sage ERP X3 offers the full power of enterprise-class ERP, in a simple and flexible package, designed to meet the exclusive requirements of mid-sized companies with complex business processes, yet limited resources and investment capabilities.

It is designed to support advanced and industry-specific processes across finance, sales, CRM, purchasing, inventory and manufacturing management within one singular software design. And as a Web-native management system, Sage ERP X3 easily connects employees, partners, suppliers and customers and can accelerate all business exchanges, within and outside the company, locally and internationally.

### Functionality, Simplicity & Rapid Implementation

Sage ERP X3 Standard Edition offers a predefined implementation framework designed to help accelerate the deployment of the ERP solution in smaller businesses (less than 50 users). With Standard Edition, Sage ERP X3 delivers a feature-packed solution that is easier to use and faster to implement, thus reducing the overall cost of ownership.

This edition provides a predefined, yet adaptable, implementation framework to customers interested in deploying the solution in a reduced timeframe, with industry-standard business requirements and processes. It benefits from preset parameters as well as predefined user roles and process flows designed to help accelerate the deployment of the solution in smaller businesses with standard distribution and/or manufacturing processes. The Standard Edition is most effective in mono-server environments and is optimized for Windows and MS SQL Server only.



Sage ERP X3 Standard Edition delivers a user-centric experience that is role-oriented with personalized screens and standard templates tailored to accelerate familiarity and productivity.

## BENEFITS

### Streamlined Operations

- Singular functional integration & database
- Supports multiple manufacturing modes
- Advanced workflow engine
- Process-oriented user interface

### Increased Business Insight

- Embedded Business Intelligence engine by Business Objects™
- Real-time analytics and dashboards
- Extensive traceability and audit tools

### Enhanced Collaboration

- SOA/Web-native architecture
- Web Services (XML, UDDI, WSL, SOAP, REST)
- MS Office integration
- Multi-currency support

### Reduced Costs

- Fast implementation
- No optional applications or interfaces
- Reduced training
- Easy administration and maintenance

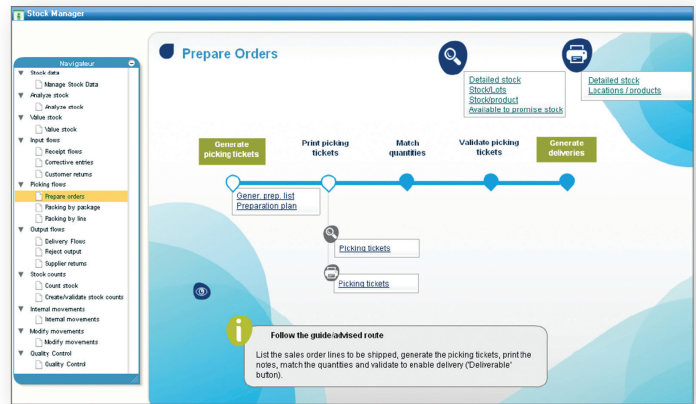
### Increased Flexibility

- Scalable, multi-tier architecture
- 4GL Integrated Development Environment
- Fast parameterization adapts to organizational changes



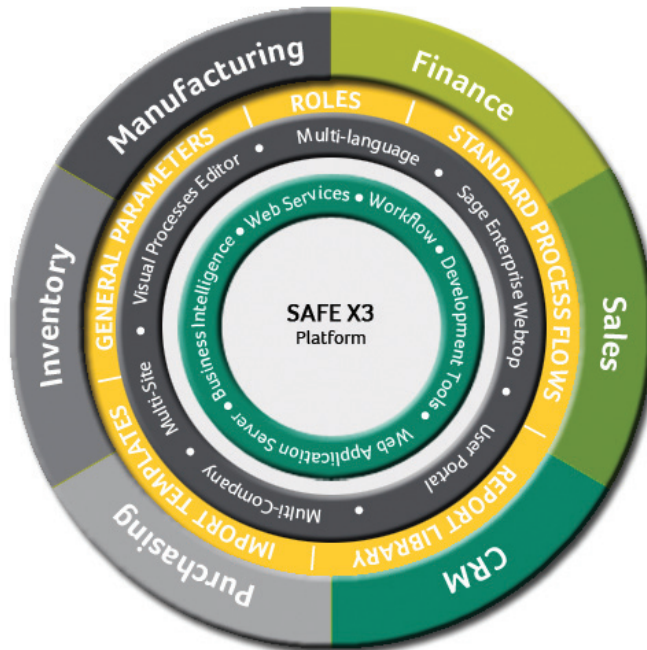
### Standard Edition At-A-Glance

- Preliminary configuration & parameters, adaptable to customer-specific requirements.
  - Full Web Client
  - Role-based user portal (16 predefined roles)
  - Visual process flow templates (Library of more than 140 templates)
- 
- Multi-language
  - Multi-currency
- 
- Optimized for mono-server environments, with Windows OS and MS SQL Server DB
- 
- Guided implementation methodology & tools
- 
- Seamless upgrade to Sage ERP X3 Premium configuration
- 
- Ideally suited for businesses with fewer than 50 users and standard industry processes



Sage Visual Processes provides a graphical, process-oriented user interface that gives each user a clear view of the task to accomplish and drives the user through the different steps.

### Sage ERP X3 | Standard Edition



Sage Application Framework for the Enterprise | SAFE X3



Data World Solutions Limited  
Expert in Business Management Solutions

Address: 18/F., Manhattan Centre, 8 Kwai Cheong Road, Kwai Chung, Hong Kong  
Tel : 852 2185 1717 Fax : 852 3151 7828  
Website: <http://www.dataworld.com.hk/dws> Email: [info.solutions@dataworld.com.hk](mailto:info.solutions@dataworld.com.hk)



Premier Partner